

Session 181: Literacy Block Systems & Structures

Carla Hewitt and Bri Luna



A Literacy Block Based in Science! A check-in:



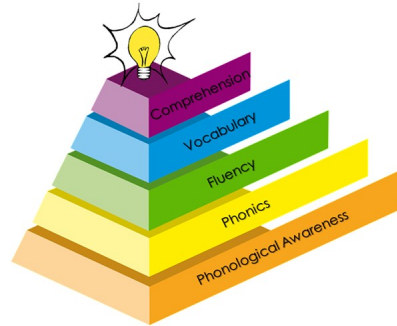
Structured Literacy

① ② ③ ④ ⑤



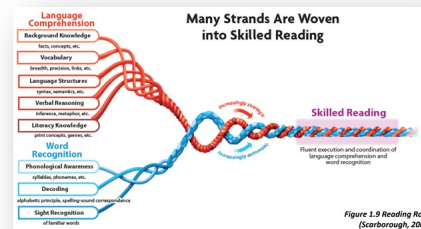
5 Components of Reading

① ② ③ ④ ⑤



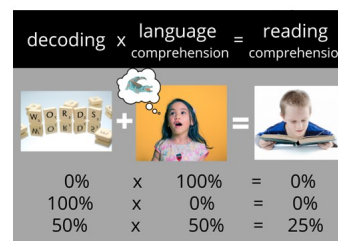
Scarborough's Reading Rope

① ② ③ ④ ⑤



The Simple View of Reading

① ② ③ ④ ⑤

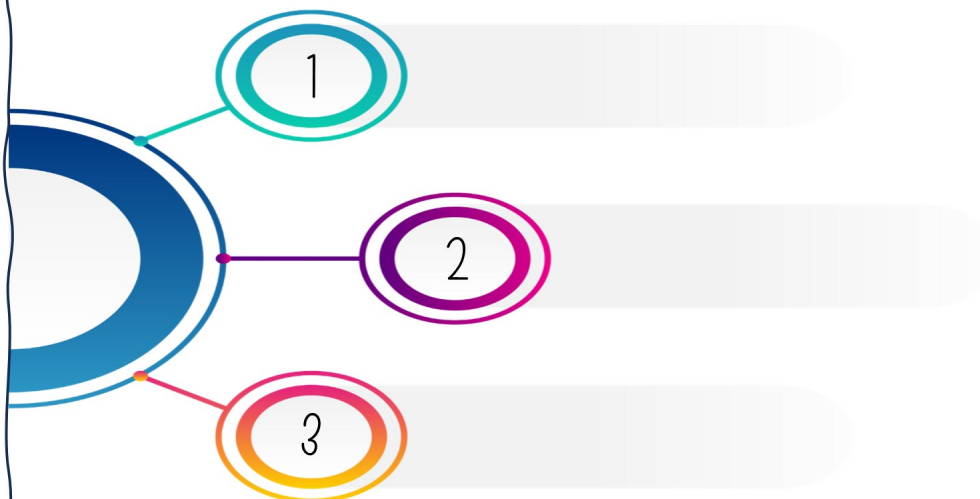


Knowledge Building

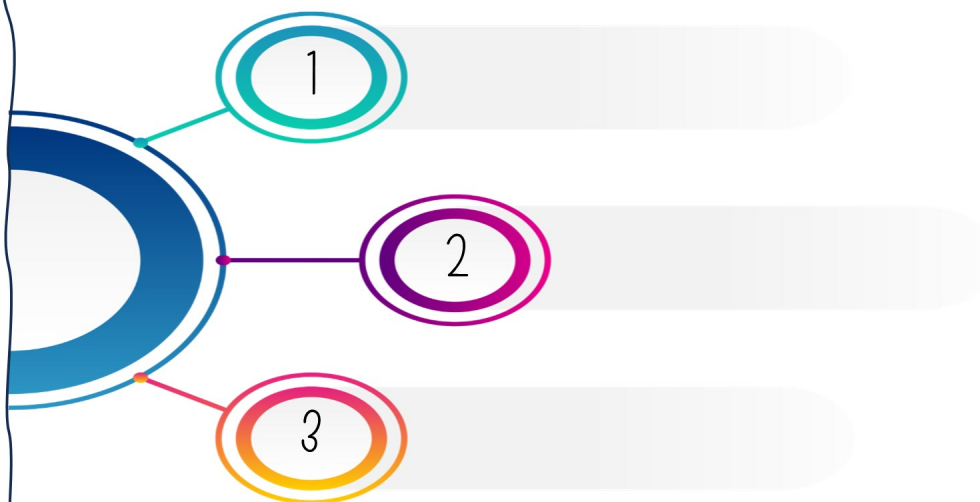
① ② ③ ④ ⑤



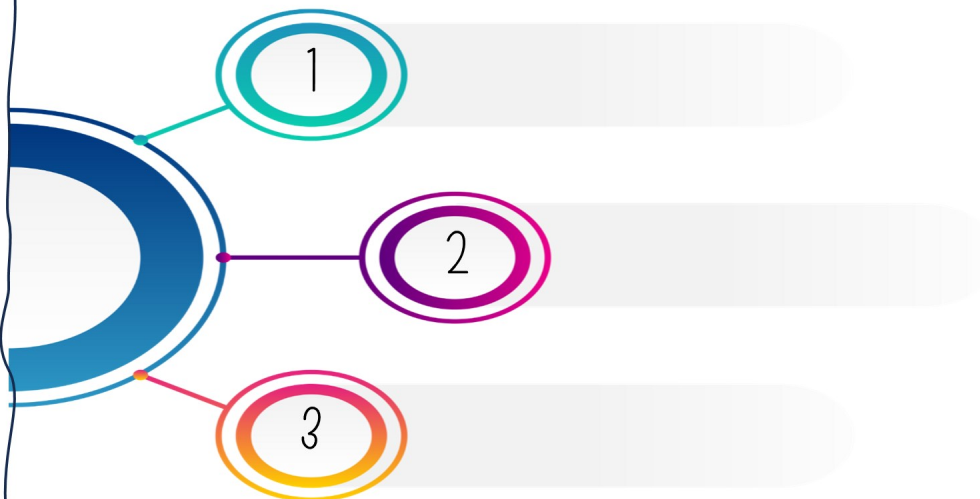
How do I fit it all in?



Data-Driven Small vs. Whole Group



Scheduling & Orgnaization



Reading Lesson Planning Table

Focus	Time	Day 1	Day 2	Day 3	Day 4	Day 5
Phonological Awareness						
Phoneme-Grapheme Correspondence Review						
Decoding & Encoding						
Irregular Words						
Connected Text						
Writing						
Total time						

Literacy Centers

THEN VS NOW

Balanced Literacy Practices

SoR- Aligned Practices

Student Choice Dictates

(lots of free-choice reading and writing)



Standards' Focus Dictates

(activities are purposely chosen to reinforce a skill)

Exploration Learning

(students discovering patterns on their own)



3 R's after Explicit Instruction

(review, repetition, and reinforce previously taught patterns)

Word Memorization

(rainbow spelling, shapes, copying, list memorization)



Language Pattern Practice

(phonemes/grapheme mapping, morphology matrix)

Focus on Leveled Books

(texts focused on predictable words; 3 cueing)



Focus on Connected Texts

(texts are decodable based on taught patterns)

Fluency Focused on Speed

(words-per-minute drives fluency)



Accuracy Before Fluency

(accurate, natural-paced reading & comprehension is priority)

Comprehension Skill of the Week Driven

(Skills drive tasks. Week 1: prediction)



Content and Knowledge Driven

(comprehension skills utilized in authentic learning)



READING REV

www.readingrev.com



SoR- Aligned

Literacy Center Ideas

R Review
R Repetition
R Reinforce

Primary



Intermediate

- | | |
|--|--|
| <ul style="list-style-type: none">• Sound- letter matching• Sound Detective• Alphabet arch• Tap it, graph it, map it!• Build words using letter magnets or chips• Vowel Intensive Activities• Pattern activity practice pages (Roll-and-read, follow the path)• Blending lines• Pyramid reading• Heart word mapping• Listen to fluent reading• Rereading for accuracy and fluency• Buddy Reading• Word Chains• Letter formation practice• Phrases practice• Syllable Surgery• Synonym/antonym match• Sentence building• Story sequence• Multiple meanings match• Fiction vs nonfiction sort• Fact vs opinion sort• Cause and effect equations | <ul style="list-style-type: none">• Add pattern-based words to sound boxes & syllable scoops• Build words using letter magnets or chips• Vowel Intensive Activities• Locate patterns in both decodable and content texts; pattern hunt• Pattern activity practice pages (word sorts, word chains, riddles)• Pattern Games (Tic-Tac-Toe, Connect 4, Word Builder)• Heart word mapping and origin study• Syllable division/ surgery practice• Listen to fluent reading• Rereading for fluency and comprehension• Partner reading• Word ladders (both pattern-based and vocabulary-based)• Morphology Matrices• Affix Hunt• POSSUM Vocabulary Activities• Syntax activities and diagramming• Story elements analysis• Plot diagram• Read and question |
|--|--|



Research on SoR-Aligned Literacy Block



Should Reading Be Taught to the Whole Class or Small Group?
| Shanahan on Literacy



Small Group vs. Whole Group Instruction
- IgnitED



Classroom Reading Groups:
5 Lessons From Recent Studies

SoR Aligned Literacy Block Center Ideas



Mrs. Winton's BLISS
5 Literacy Centers Aligned to the Science of Reading



FLORIDA CENTER FOR READING RESEARCH

Professional Development



BRI LUNA
READING REV

Get In Touch:

- 📞 970-217-1085
- 🌐 www.readingrev.com
- ✉ bri@readingrev.com

One knowledgeable, compassionate *teacher* can change everything.

One knowledgeable,
compassionate
teacher
can change **EVERYTHING.**